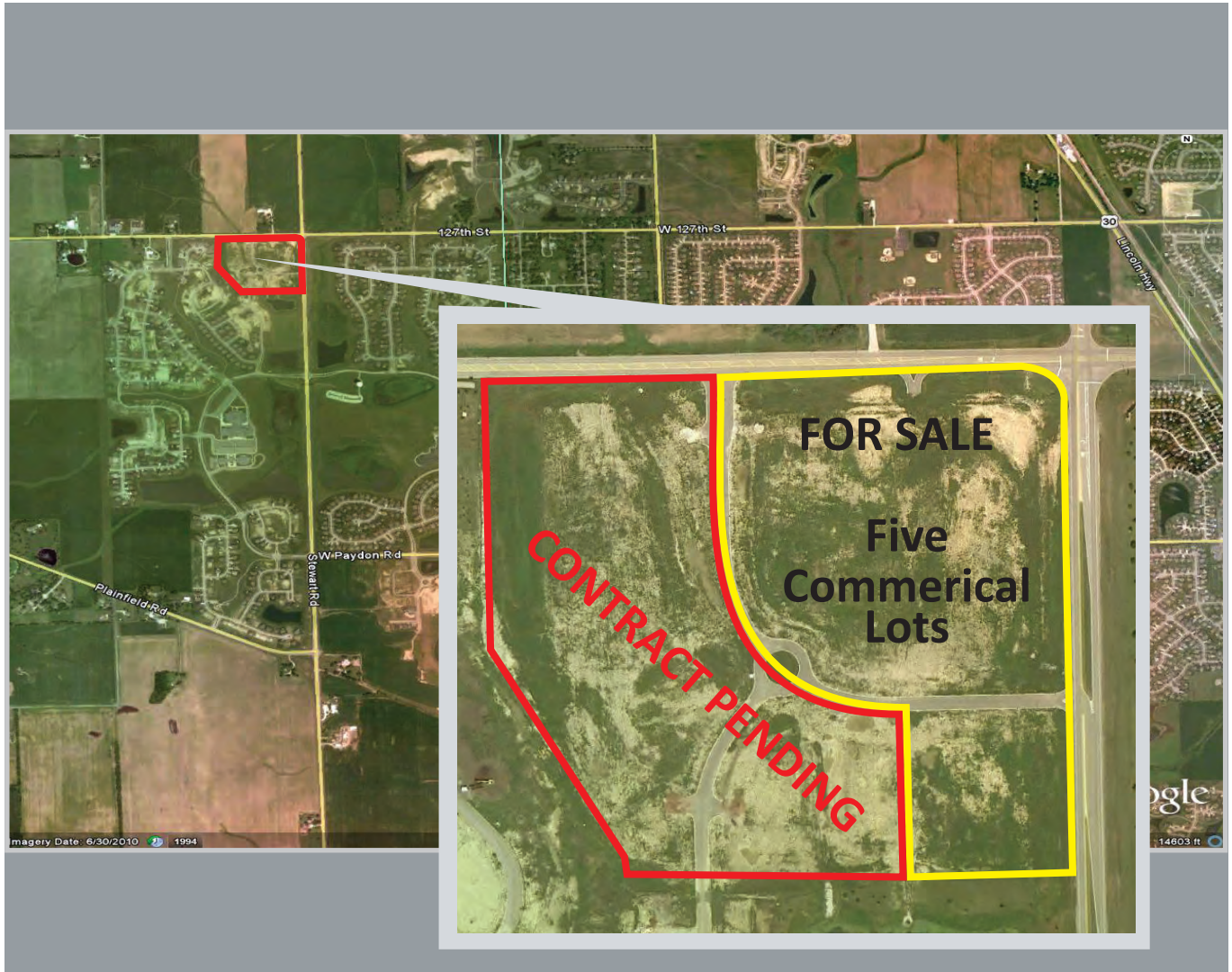


Grande Park Commercial

9.4± acres • Ridge Road & 127th Street • Plainfield, Illinois



Tim Greene
Listing Agent



34 Rance Road • Oswego IL 60543
630.551.3333 • johngreeneland.com

Grande Park Commercial

Oswego Township · 9.4± acres · Kendall County · Plainfield, Illinois



GRANDE PARK IS AN 884-ACRE COMMUNITY WHERE FAMILIES WILL EXPERIENCE A TRULY GRAND LIFESTYLE.

GRANDE PARK IS LOCATED THREE MILES WEST OF ROUTE 59 IN PLAINFIELD, ILLINOIS.



Property Features

ACREAGE
9.4± acres

PRICE
\$2,800,000 for five commercial lots

PROPERTY INDEX NUMBER
03-36-130-002 through 03-36-130-009
03-36-131-001 through 03-36-131-003
03-36-132-002 through 03-36-132-006

CURRENT ZONING
The current zoning is general commercial. The five commercial lots range in size from 54,000-109,000 square feet.

PROPERTY LOCATION
This property is located within Grande Park, a master planned community. Located at the southwest corner of Stewart Road (Ridge Road) & 127th Street (Simons Road) in Plainfield.

The subject property is the multi-family (currently under contract) and commercial component of the Grande Park subdivision. The property includes two multi-family lots, which are currently under contract, and five commercial lots.



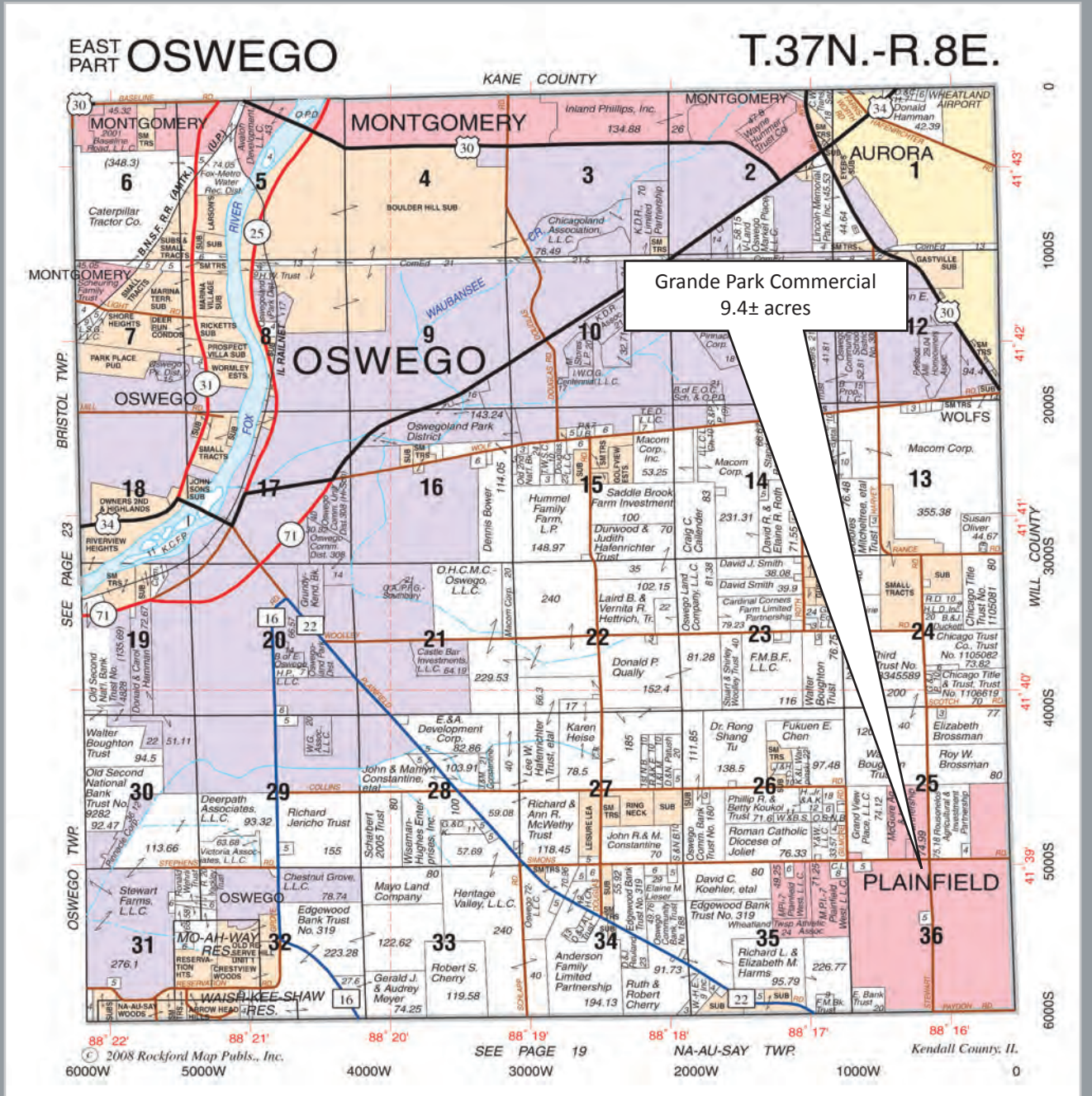
Tim Greene
Listing Agent



34 Rance Road · Oswego IL 60543
630.551.3333 · johngreeneland.com

Grande Park Commercial

Oswego Township · 9.4± acres · Kendall County · Plainfield, Illinois



Grande Park Commercial

Oswego Township · 9.4± acres · Kendall County · Plainfield, Illinois



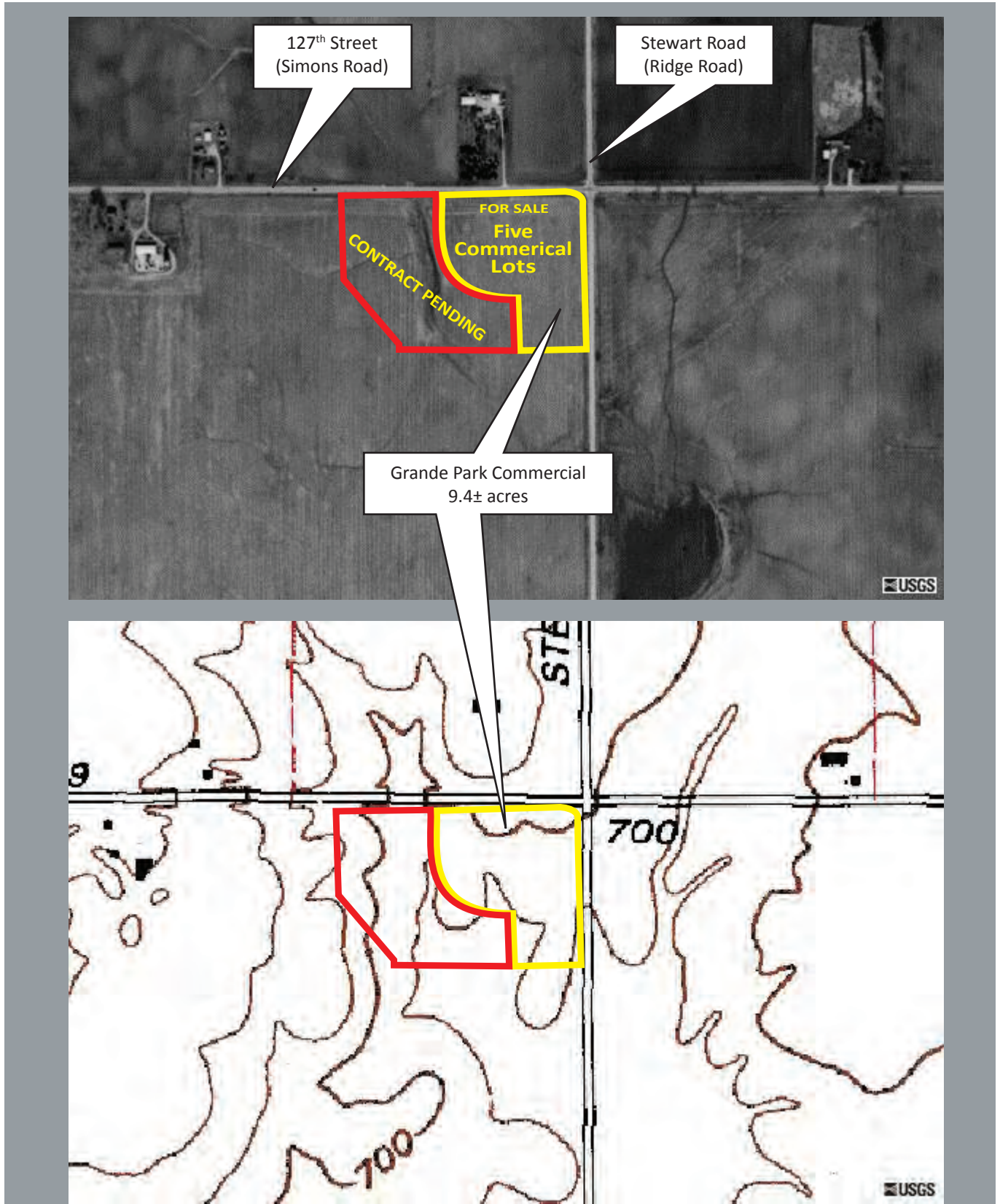
Lot Type	Lot Number	Net Square Feet	Net Acres
Commercial	1	82,063	1.9
Commercial	2	58,941	1.4
Commercial	3	109,976	2.5
Commercial	4	54,631	1.3
Commercial	5	100,583	2.3

johngreeneLAND.com

The information contained herein is from sources john greene Land Company deems reliable, but is not guaranteed. This offer may be withdrawn from the market or be subject to a change in price or terms without advance notice. Seller reserves the right to reject any and all offers. Duplication is expressly prohibited. 4.8.11

Grande Park Commercial

Oswego Township · 9.4± acres · Kendall County · Plainfield, Illinois



johngreeneLAND.com

The information contained herein is from sources John Greene Land Company deems reliable, but is not guaranteed. This offer may be withdrawn from the market or be subject to a change in price or terms without advance notice. Seller reserves the right to reject any and all offers. Duplication is expressly prohibited. 4.8.11

