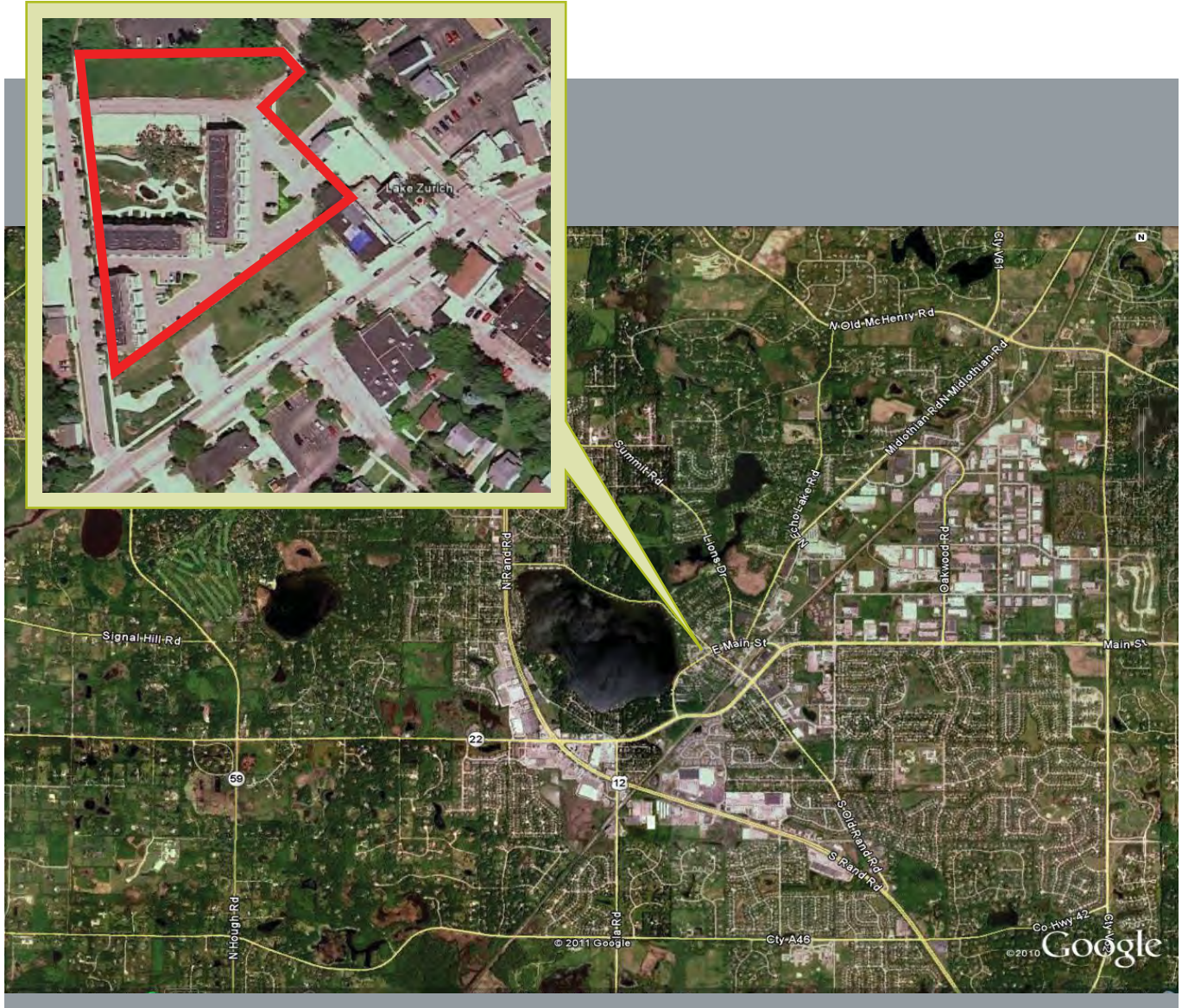


Somerset

Village of Lake Zurich · 19 townhome lots · 10 finished townhome units · Lake County, Illinois



Tim Greene
Listing Agent



34 Rance Road · Oswego IL 60543
630.551.3333 · 630.551.3434 (f)
johngreeneland.com

The information contained herein is from sources John Greene Land Company deems reliable, but is not guaranteed. This offer may be withdrawn from the market or be subject to a change in price or terms without advance notice. Seller reserves the right to reject any and all offers. Duplication is expressly prohibited. 5.2.11

Specialists in development, investment and agricultural land throughout Illinois

Somerset

Village of Lake Zurich · 19 townhome lots · 10 finished townhome units · Lake County, Illinois



- walking distance to Lake Zurich, small retail shops and recreational activities.
- 1 mile from many national retailers, restaurants and commercial services along the Rand Road corridor.
- less than 10 minutes from Deer Park Town Center, an upscale outdoor shopping mall.



Property Features

Somerset Townhomes (aka Market Commons Communities) was intended as an upscale downtown townhome community, part of larger plans for redeveloping downtown Lake Zurich.

DESCRIPTION

10 improved townhome units and 19 vacant townhome lots, 7 of which are improved with slab foundations, in a residential community in downtown Lake Zurich, Illinois.

LOCATION

Somerset Townhomes at the Residences of Lake Zurich is located on the north side of Main Street (former Rt. 22) between Lakeview Place and Old Rand Road in downtown Lake Zurich. Rt. 12 (Rand Road) is approximately one mile to the west on the opposite side of the lake. The site is primarily accessed from Lakeview Place, with an additional entrance from Old Rand Road.

PRICE

\$1,478,600

PIN

14.20.101.054-59; 14.20.101.061-067;
14.20.101.069-075; 14.20.101.079-80;
14.20.101.081-082 (partial); 14.20.101.083-084;
14.20.101.086; 14.20.101.088-090; 14.20.101.092;
14.20.101.095; 14.20.101.097-098; 14.20.101.102;
14.20.101.106; 14.20.101.110



Tim Greene
Listing Agent



34 Rance Road · Oswego IL 60543
630.551.3333 · 630.551.3434 (f)
johngreeneland.com

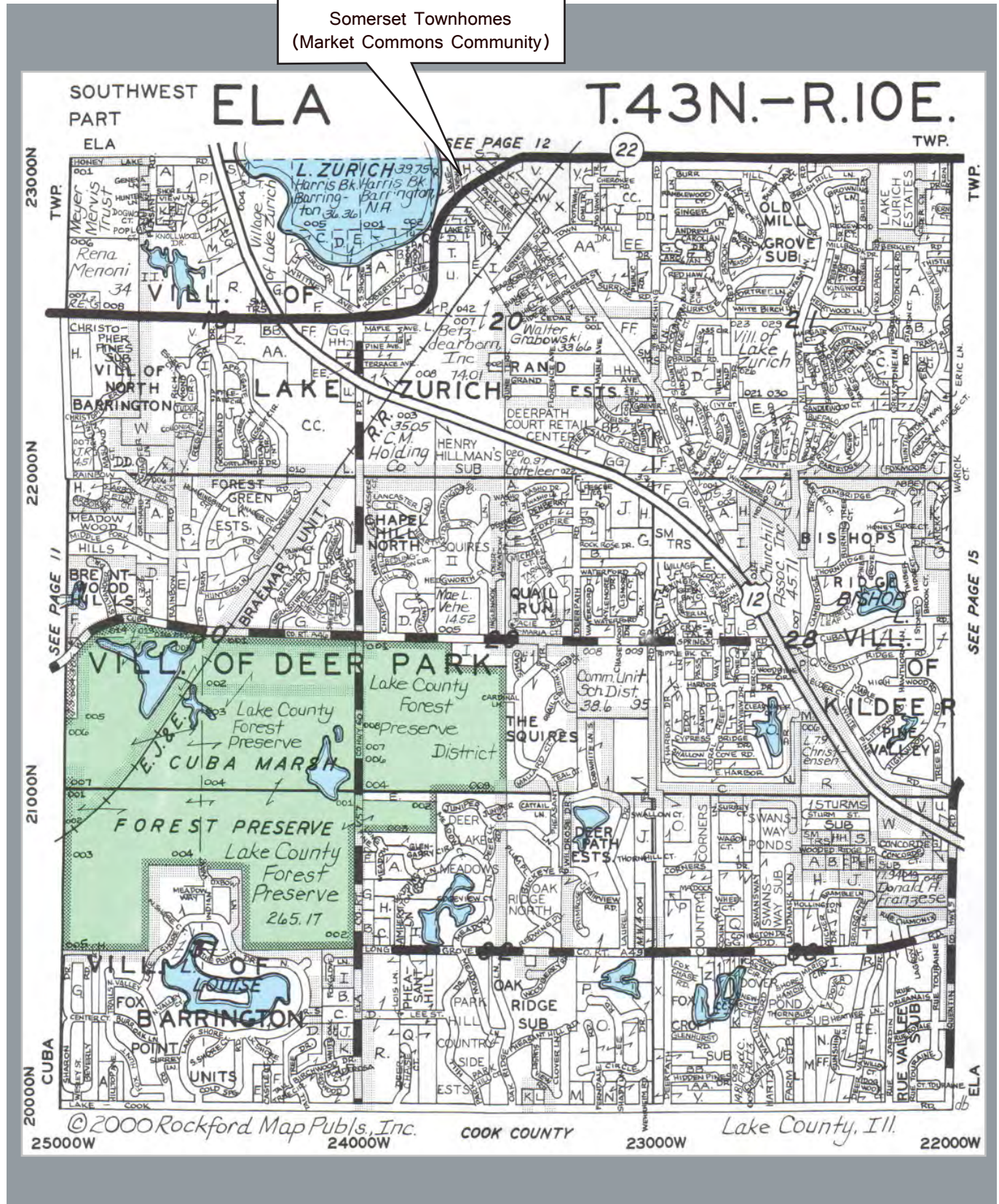
The information contained herein is from sources John Greene Land Company deems reliable, but is not guaranteed. This offer may be withdrawn from the market or be subject to a change in price or terms without advance notice. Seller reserves the right to reject any and all offers. Duplication is expressly prohibited. 5.2.11

Specialists in development, investment and agricultural land throughout Illinois

Somerset

Village of Lake Zurich · 19 townhome lots · 10 finished townhome units · Lake County, Illinois

Somerset Townhomes
(Market Commons Community)

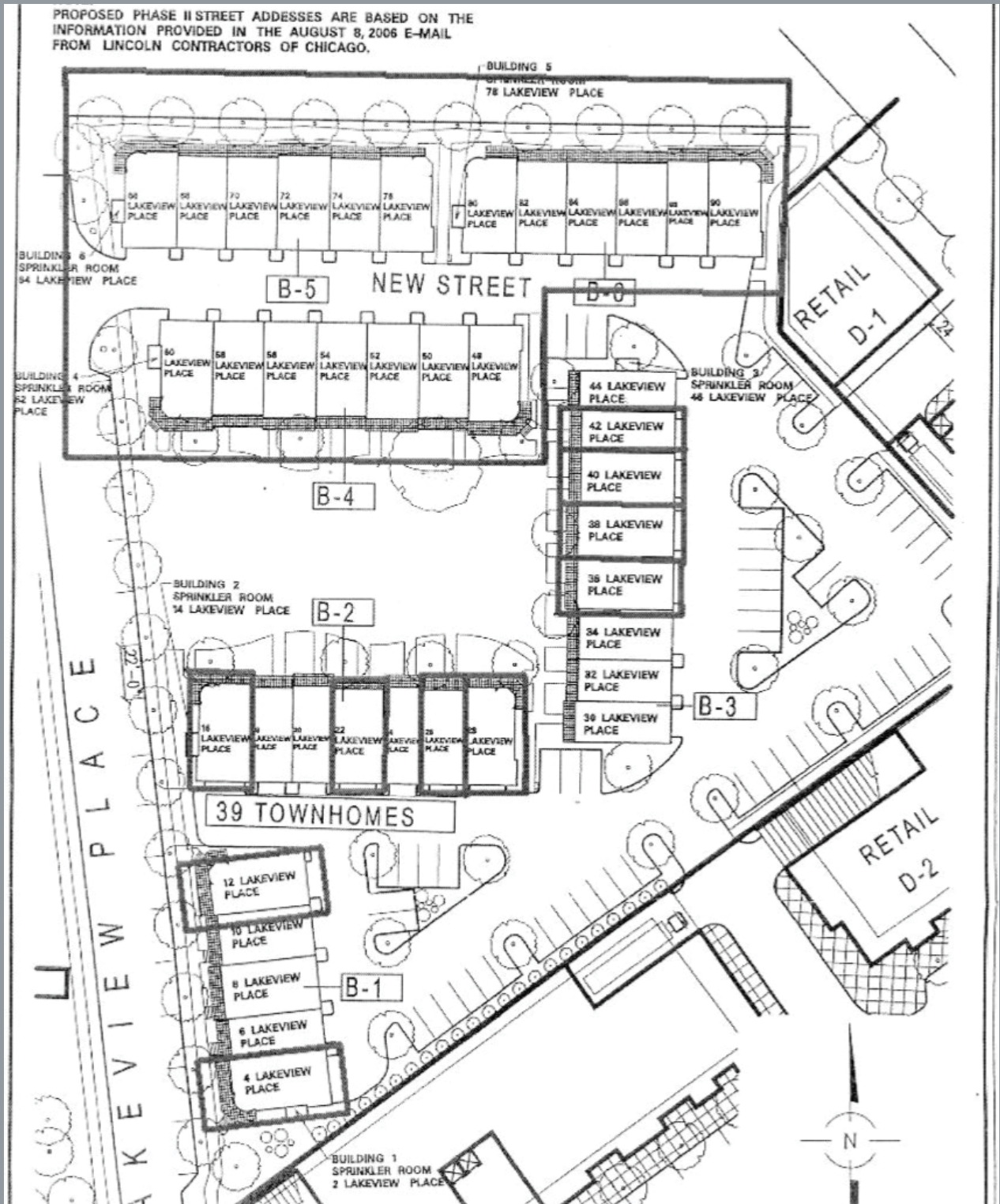


johngreeneLAND.com

The information contained herein is from sources john greene Land Company deems reliable, but is not guaranteed. This offer may be withdrawn from the market or be subject to a change in price or terms without advance notice. Seller reserves the right to reject any and all offers. Duplication is expressly prohibited. 5.2.11

Somerset

Village of Lake Zurich · 19 townhome lots · 10 finished townhome units · Lake County, Illinois



johngreeneLAND.com

The information contained herein is from sources John Greene Land Company deems reliable, but is not guaranteed. This offer may be withdrawn from the market or be subject to a change in price or terms without advance notice. Seller reserves the right to reject any and all offers. Duplication is expressly prohibited. 5.2.11

