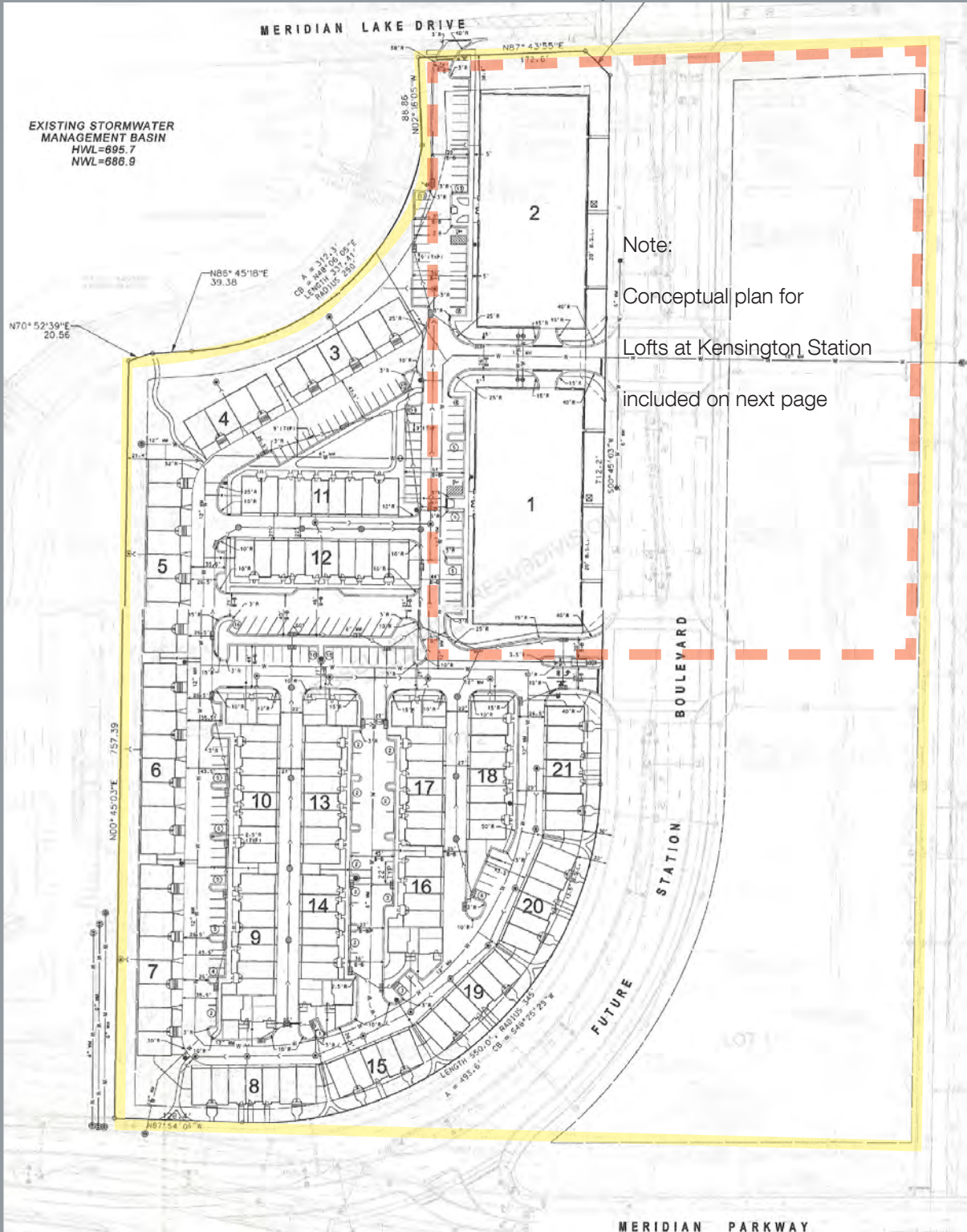




# Kensington Station (North Parcel)

24.8± total acres preliminarily planned for 429 residential units · Aurora · DuPage County, Illinois

North Parcel - Preliminary Plat



# Kensington Station (North Parcel)

24.8± total acres preliminarily planned for 429 residential units · Aurora · DuPage County, Illinois

North Parcel - Lofts at Kensington Station Concept Plan



## Lofts at Kensington Station AURORA, IL

[johngreeneLAND.com](http://johngreeneLAND.com)

The information contained herein is from sources John Greene Land Company deems reliable, but is not guaranteed. This offer may be withdrawn from the market or be subject to a change in price or terms without advance notice. Seller reserves the right to reject any and all offers. Duplication is expressly prohibited. 6.21.11